



More information

Our website has the latest information about our services, our events calendar and news. Visit merrhealth.org.au

Quick contacts

All services
1300 637 744 (MERRI H)

Carer Gateway
1800 422 737

Victims Assistance Program
1300 362 739

My Aged Care*
1800 200 422

Feedback
03 9389 2234

We have many sites across Victoria. Visit our website merrhealth.org.au for all site details and contact numbers.

*My Aged Care is the first point of contact for aged care services.

Contact

Merri Health
Registered Office:

Wurundjeri Woi Wurrung
11 Glenlyon Road Brunswick VIC 3056

Published February 2023. Supported by the Australian Government Department of Social Services. Supported by the State Government.



MerriHealth Young adult Services



Young adults
Part of your Merri Health network

Our services and support help put young adults on track for a healthy, connected and fulfilling life.



Health services

Audiology

Our audiology service provides hearing assessments for young people up to 18 years of age, to help with:

- > Early detection of hearing loss
- > Hearing vs. listening

Dietetics

This service can provide healthy eating and nutritional advice for people with a diet-related health problem. Information will be given on food choices to help form better eating habits. People can access this service for help with issues such as being over and underweight, chronic disease, high cholesterol, cancer, allergy and other issues.

Exercise physiology

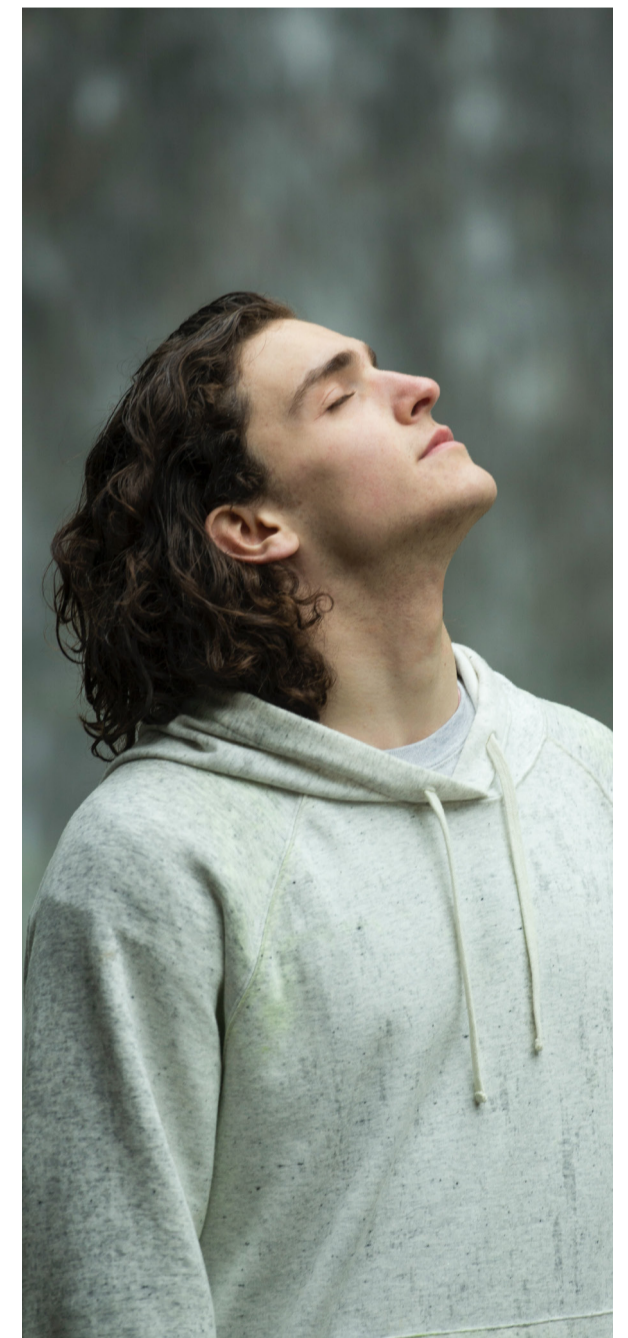
Individual exercise assessments for young people with a variety of conditions including autism, cerebral palsy, muscular dystrophy and weight management. Exercise physiologists can help with physical activity advice to help you lead a healthier lifestyle. We can provide land-based, water-based, group, gym or home-based exercise programs.

Physiotherapy

Physiotherapy can help with movement and getting around, injuries and/or pain conditions. A physiotherapist can provide home-based exercise programs or may recommend water exercises, gentle gym classes and chair-based classes.

Podiatry

Podiatrists can help prevent and treat any feet, ankle and lower leg problems. They can provide information on how to avoid problems and advice on foot care and footwear.





Merri Health
Healthcare that moves with you

Merri Health creates healthy, connected communities through local health services for people at every age and stage of life.

We know that at different times, your health needs change. That's why we support you throughout life, with services spanning from children's health to aged care.

Carer Gateway

Carer Gateway is an Australian Government initiative that delivers improved and expanded services to carers across Australia.

In Victoria, these services are provided by a group of seven health and social support providers, led by Merri Health.

All carers can access Carer Gateway services.

www.carergateway.gov.au

Healthcare
that moves
with you



Counselling

Drop-in community service

Our drop-in service is known as DUTY and provides one-off help to address your needs. It is provided from 93 Bell Street Coburg, from 1pm to 3pm, Monday to Friday.

Our workers are professionally trained and it is a confidential service. As this is a drop-in service, an appointment is not needed, however a maximum of four people can be seen per day. We also provide telephone interpreters if needed.

Family violence counselling

This specialist service provides counselling and support for women and children who have gone through or are going through family violence. We help you to recover from family violence, support your safety, help you to not feel alone and connect you to your community.

Queer youth theatre

Our queer youth theatre is known as YGLAM and is for same-sex attracted and gender diverse young people aged between 14 to 25 years. Rehearsals occur weekly. No experience is necessary, just enthusiasm and commitment!

Victims Assistance Program

This program provides help for people who have experienced violence. We can help you cope with the effects of the crime by taking you through 'legal talk', finding support services and helping you feel safe again. We also help family members of victims of a violent act, dependents and partners of people who have died as a result of an act of violence.

Costs

Our services are either free or require a small fee. Some of our services are free. To find out whether there is a fee for a service, visit our website www.merrihealth.org.au and search for 'fees' or call 1300 637 744.

Merri Health is an inclusive service provider. We are committed to providing safe and high quality services that respect the needs, wants and aspirations of all people.

