

Final evaluation

2017–2022

Beginning in 2017, the work of Ready, Set, Prep! happened across the settings in the community where children live, learn and play. This was in response to the AEDC results in Fawkner which showed more children were starting school experiencing vulnerability compared to in the rest of the Merri-bek Local Government Area and the state average. Initially 5 schools in Fawkner worked together but by 2021, further need for the work was identified, and Ready, Set, Prep! expanded to Glenroy and Hadfield. By the end of 2022, more than 40 local schools, kindergartens and early years services, were part of the partnership, as well as community members.

The Ready, Set, Prep! team have created a short animation highlighting Ready, Set, Prep!'s journey over the past 6 years. [Click here](#) to watch the animation.



Merri Health helped to bring everyone together, to share their perspectives to guide the work of Ready, Set, Prep! Together the partnership came up with this vision:

Ready, Set, Prep! is a partnership between community and early years service providers to improve service quality and access, learning and educational opportunities, for families and children in northern Merri-bek. Together, we are creating a healthy and happy community.

To meet these aims, there were a range of tailored opportunities that community members and services could become involved with. These key activities were a Transition Network,

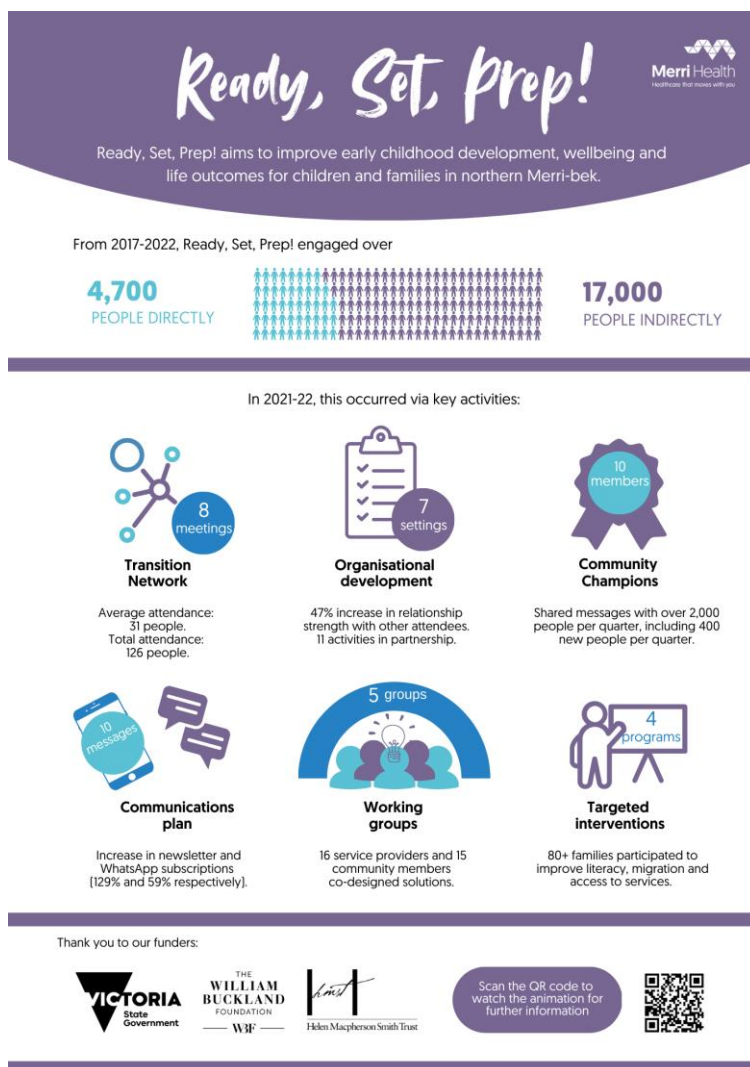
organisational development work, Community Champions, communications, working groups and targeted interventions.

In total, Ready, Set, Prep! has reached over 4,700 people directly and 17,000 people indirectly over the 6 years of the project. 92% of the community members and service providers involved in making decisions for Ready, Set, Prep! reported that working together had improved outcomes for families in the local community. This includes delivering new and improved services, as well as increasing access to information about health and early childhood development, and local community services for families.

Together, the results achieved from the various Ready, Set, Prep! activities demonstrate that positive change has started to occur for children and families in northern Merri-bek. However, there is continuing need for this work. Over the past 6 years, Ready, Set, Prep! had aimed to create sustainable change beyond the life of the initiative. This includes strengthening partnerships and relationships, developing accessible resources for consistent messaging and increasing community capacity and leadership. This will allow the foundations and models that have been put in place to be used to support positive change into the future.

Thank you to the schools, kindergartens, early years services and community members in northern Merri-bek for your ongoing support and contribution to Ready, Set, Prep!.

You can also see an infographic [here](#) or view a detailed report [here](#).



Contact community.wellbeing@merrihealth.org.au for further information.